

## CycoreFX HD-64 Install Read Me

This is a fully functional unlockable demo version. Purchase online and unlock it in an instant! To unlock the plug-ins:

- Install CycoreFX HD-64 and Presets.
- Launch Adobe After Effects and apply Effects -> Utility -> CFX Unlock to any layer.
- Click "Unlock" and enter your key.

For detailed information on how to purchase a key and unlock the plug-ins, please read the "Purchase and Unlock.pdf" document.

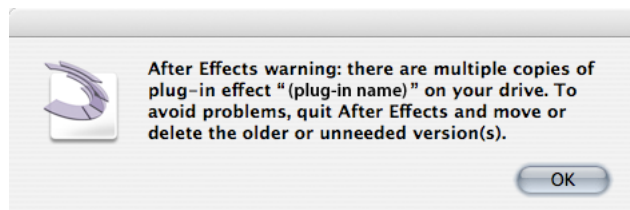
### System requirements:

You need a Intel® Pentium® 4 or AMD Athlon® 64 processor, Adobe After Effects CS5 or greater and 9 MB of hard disk space to use the CycoreFX HD-64 plug-ins and Presets.

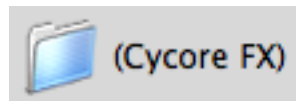
### Installation instructions:

#### Automatic Installation

Automatically installs CycoreFX HD-64 and included presets for the After Effects version that is selected during the installation process. To install for other supported versions of After Effects, simply re-run the installer and select another version during the installation process. Previous CycoreFX HD-64 versions will be deleted (Folders disabled by brackets will not be deleted). This is to avoid conflicts, resulting in a "multiple copies" error message at AE launch (see illustration below).



**Note.** If no supported After Effects version is found, you can use the Manual Install option to select the install location. If a previously installed version of CycoreFX HD-64 has been renamed it will not be deleted by the installer. In that case you need to delete it manually or move it outside the After Effects applications folder. If you for any reason would like to keep the previous version in the Plug-ins folder you can disable it by adding brackets around the name (see illustration below).



### Documentation and Sample projects

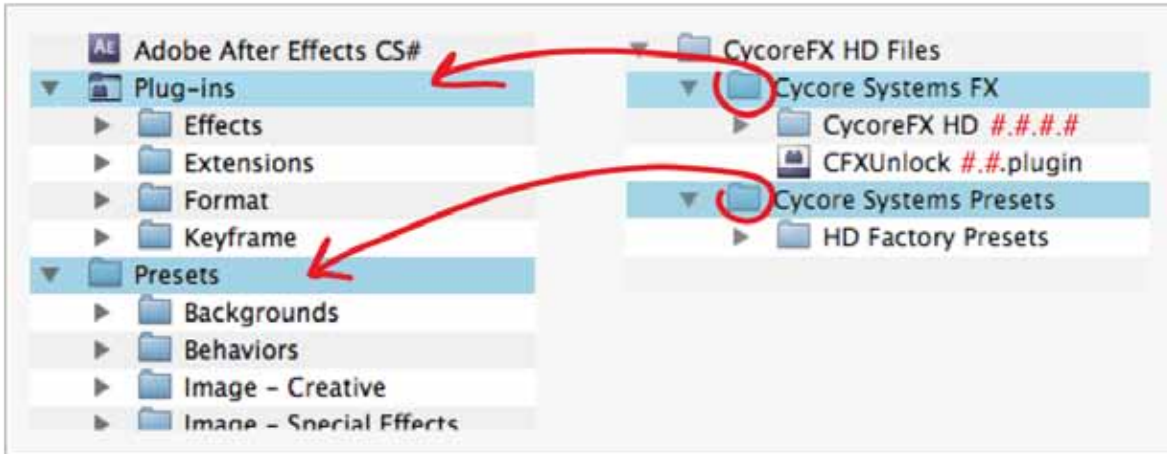
Installation of the Sphere Utilities documentation and sample projects are selected by default and you will be prompted to select an install directory during the installation process. A shortcut to documentation and sample projects is also installed in the Start menu in a "Cycore Systems FX" program group. If you do not want these files to be installed, deselect one or both of these options.

## Manual Install

Manually select the install location for the CycoreFX HD-64 Files folder by using the “Browse...” button. After installation, locate the CycoreFX HD-64 Files folder on your hard disk and use one of the following alternatives:

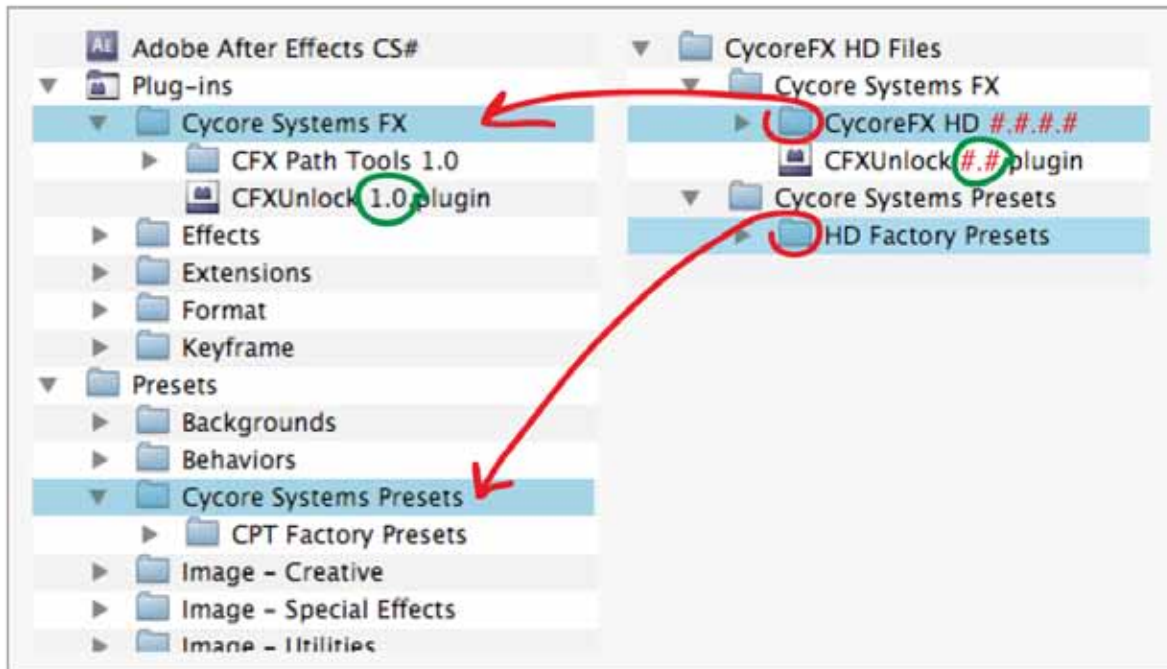
### 1) No other CycoreFX products have been installed:

Locate the After Effects application folder and move the Cycore Systems FX folder to Plug-ins and the Cycore Systems Presets folder to Presets (see illustration below).



### 2) Another CycoreFX product has been installed:

Locate the After Effects application folder. Navigate to Plug-ins and Presets, the Cycore Systems FX and the Cycore Systems Presets folders already exist in these locations. As you probably do not want to overwrite these files, move only the contents of Cycore Systems FX and Cycore Systems Presets (see illustration below). If you are adding a newer version make sure to delete the previous one to avoid “multiple copies” conflicts.



## Updates and Support:

Stay tuned to [www.cycorefx.com](http://www.cycorefx.com) for updates and tutorials.  
For support send e-mail to [support@cycorefx.com](mailto:support@cycorefx.com).